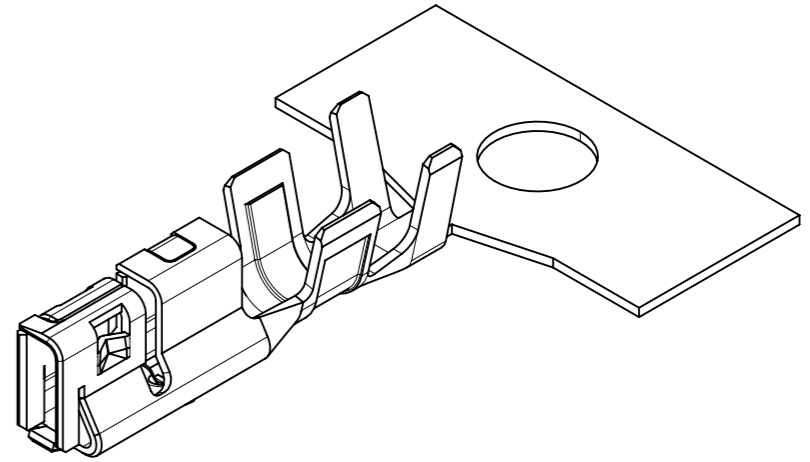
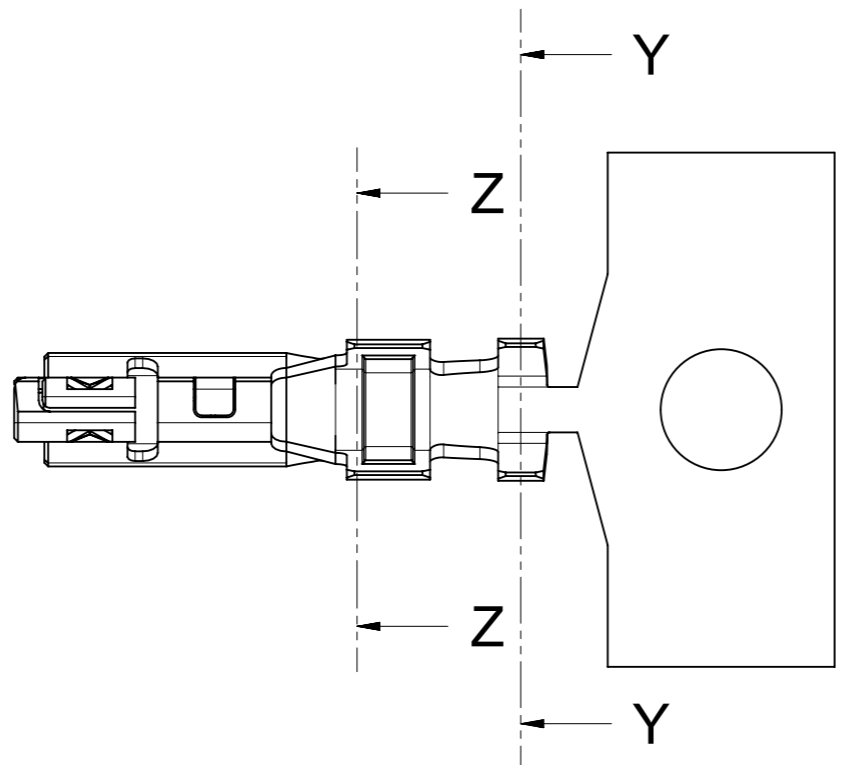
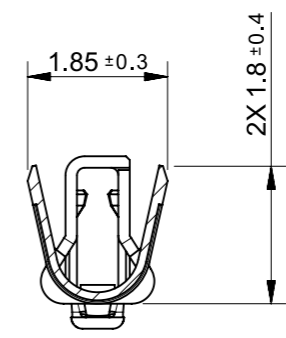
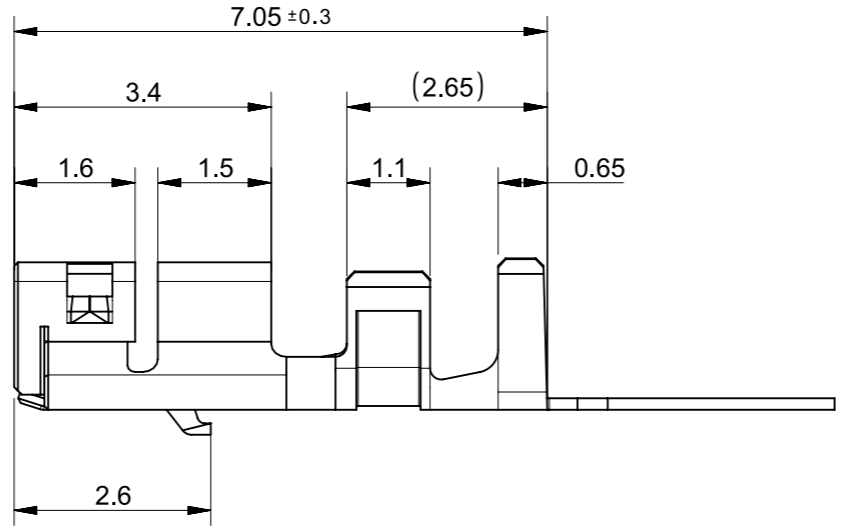
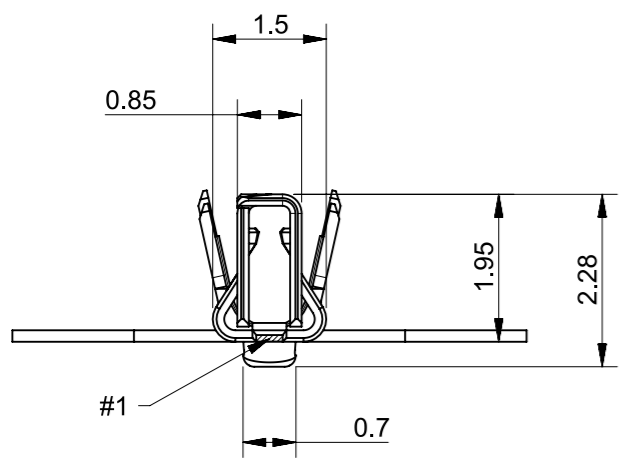


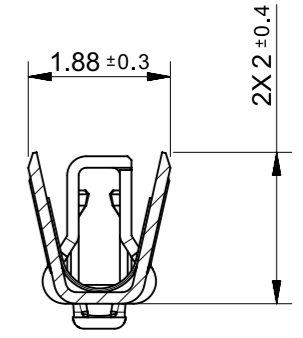
GENERAL TOLERANCE									USED ON	
10 MAX	30 MAX	50 MAX	70 MAX	100 MAX	120 MAX	250 MAX	250 OVER	ANGLE		ECCENT
±0.15	±0.20	±0.30	±0.40	±0.50	±0.75	±0.90	±1.4	±0.5°	0.1	



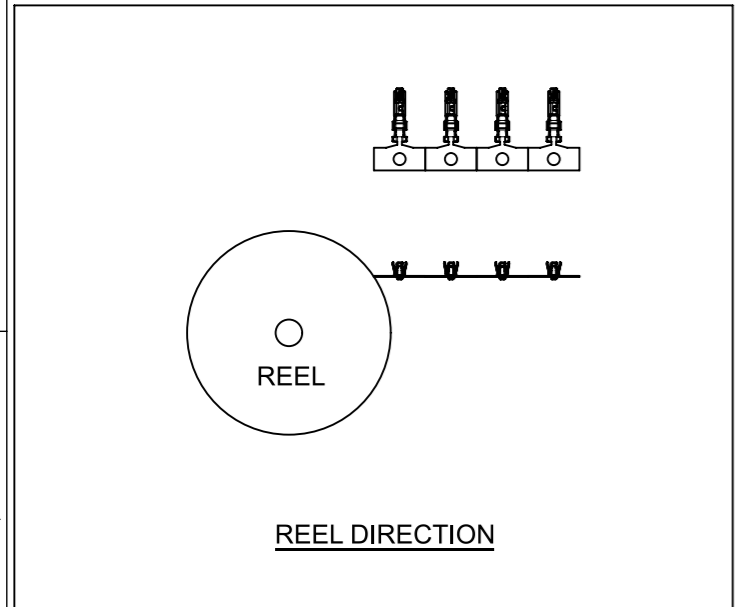
ISO VIEW



SECTION Z-Z



SECTION Y-Y



- NOTES:
1. MATERIALS : CORSON ALLOY, 0.15T
 2. APPLICABLE HOUSING : 560123 SERIES
 3. APPLICABLE WIRE : SEE CS-560124-001
 4. GENERAL TOLERANCE : SEE TABLE
 5. ELV AND RoHS COMPLIANT
 6. PRODUCT SPECIFICATION : PS-5601240131
 7. PACKING SPECIFICATION : PK-560124-001
 8. CRIMP SPECIFICATION : CS-560124-001
 9. PLATING : (CONTACT AREA) SEPARATED Au PLATING 0.2um MIN.
(UNDERPLATE) NICKEL OVERALL 1.5um MIN.
(UNPLATE) AREA #1

ORDER NO.	MATERIAL NO.
560124-0131	5601240131

SYMBOLS		THIS DRAWING CONTAINS INFORMATION THAT IS PROPRIETARY TO MOLEX ELECTRONIC TECHNOLOGIES, LLC AND SHOULD NOT BE USED WITHOUT WRITTEN PERMISSION		CURRENT REV DESC: PCN 513486		molex	
▽ = 0	mm	SCALE	10:1	EC NO:			
▽ = 0	GENERAL TOLERANCES (UNLESS SPECIFIED)		DRWN: Seon Ah Kim		20-Oct-2023	DURACLIC ISL SERIES (GOLD PLATING)	
▽ = 0	ANGULAR TOL ± 0.5°		CHK'D: Seon Ah Kim		20-Oct-2023	PRODUCT SALES DRAWING	
▽ = 0	4 PLACES	± 0	APPR: Takashi Iida		24-Oct-2023	DOCUMENT NUMBER	
▽ = 0	3 PLACES	± 0	INITIAL REVISION:		SD-560124-002		
▽ = 0	2 PLACES	± 0	DRWN: RFC_PLMIMP		DOC TYPE DOC PART REVISION		
▽ = 0	1 PLACE	± 0	APPR:		PSD 001 B		
▽ = 0	0 PLACES	± 0	DRAFT WHERE APPLICABLE MUST REMAIN WITHIN DIMENSIONS		MATERIAL NUMBER		
▽ = 0	THIRD ANGLE PROJECTION		DRAWING		SERIES	CUSTOMER	SHEET NUMBER
▽ = 0	A3-SIZE		560124		GENERAL MARKET		1 OF 1